

Microvalvola ad azionamento meccanico e manuale

Serie VM1000

La struttura miniaturizzata riduce lo spazio di montaggio. Collegamento con raccordo flessibile incorporato. Tipo di attacco: Laterale Inferiore



Dati tecnici

Tipo di valvola	Otturatore N.C.
Numero vie	2 o 3
Corsa totale	4.8mm (Esecuzione base)
Connessioni	Laterale o inferiore
Fluido	Aria
Pressione di esercizio	0 ÷ 0.8MPa
Temperatura d'esercizio	-5 ÷ 60°C (Senza congelamento)
Sez. equivalente (Nl/min)	1mm ² (49.03)
Lubrificazione	Non richiesta/Olio per turbine #1 (ISO VG32)
Raccordo	Con raccordo flessibile
Peso (Esecuzione base)	6g

Varianti

Corsa totale (T.T.)	2.5mm (Esecuzione base)
---------------------	-------------------------

- Possibilità di installare un attuatore disponibile sul mercato per il microsensore V.
- Non dimenticare che esistono diversi tipi di microsensore, come ad esempio P.T./O.T. o F.O.F..
- Il sensore con T.T. 2.5mm è disponibile solo per l'esecuzione base.

Modelli

	Serie	Connessioni	N. di vie	Tubo applicabile		Note
				T0425	TU0425/T0403	
Azionamento meccanico	Esecuzione base	Lato	3	VM1000-4N-00	VM1000-4NU-00	
			2	VM1100-4N-00	VM1100-4NU-00	
		Base	3	VM1010-4N-00	VM1010-4NU-00	
			2	VM1110-4N-00	VM1110-4NU-00	
	Leva a rullo	Lato	3	VM1000-4N-01	VM1000-4NU-01	
			2	VM1100-4N-01	VM1100-4NU-01	
		Base	3	VM1010-4N-01	VM1010-4NU-01	
			2	VM1110-4N-01	VM1110-4NU-01	
	Leva a rullo	Lato	3	VM1000-4N-02	VM1000-4NU-02	
			2	VM1100-4N-02	VM1100-4NU-02	
		Base	3	VM1010-4N-02	VM1010-4NU-02	
			2	VM1110-4N-02	VM1110-4NU-02	
Azionamento manuale	Leva 2 posizioni	Lato	3	VM1000-4N-08	VM1000-4NU-08	
			2	VM1100-4N-08	VM1100-4NU-08	
		Base	3	VM1010-4N-08	VM1010-4NU-08	
			2	VM1110-4N-08	VM1110-4NU-08	
	Pulsante	Lato	3	VM1000-4N-32R	VM1000-4NU-32R	Rosso
			2	VM1100-4N-32R	VM1100-4NU-32R	Rosso
		Base	3	VM1010-4N-32R	VM1010-4NU-32R	Rosso
			2	VM1110-4N-32R	VM1110-4NU-32R	Rosso
		Lato	3	VM1000-4N-32B	VM1000-4NU-32B	Nero
			2	VM1100-4N-32B	VM1100-4NU-32B	Nero
		Base	3	VM1010-4N-32B	VM1010-4NU-32B	Nero
			2	VM1110-4N-32B	VM1110-4NU-32B	Nero
		Lato	3	VM1000-4N-32G	VM1000-4NU-32G	Verde
			2	VM1100-4N-32G	VM1100-4NU-32G	Verde
		Base	3	VM1010-4N-32G	VM1010-4NU-32G	Verde
			2	VM1110-4N-32G	VM1110-4NU-32G	Verde

Codici di ordinazione

VM1 0 0 0 - 4N - 00 R

• Tubo applicabile (Materiale/Misura)		• Attuatore		• Colore del pulsante	
4N	Nylon $\varnothing 4/2.5$ (T0425)	00	Esecuzione base	R	Rosso
	Nylon $\varnothing 4/3$ (T0403)	01	Leva a rullo	G	Verde
4NU	Nylon morbido $\varnothing 4/2.5$ (TS0425)	02	Leva a rullo	B	Nero
	Poliuretano $\varnothing 2.5$ (TU0425)	08	Leva 2 posizioni		
		32	Pulsante		

• Corsa totale/Esecuzione base (T.T.)	
0	4.8mm
1	2.5mm (Su richiesta)

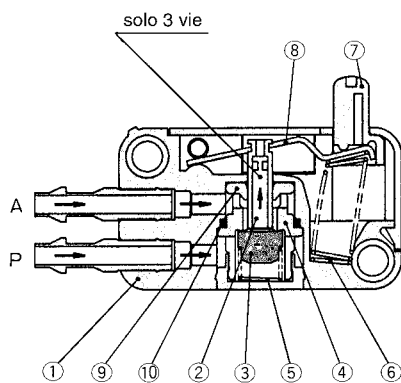
*Solo esecuzione base.

• Connessioni	
0	Lato
1	Base

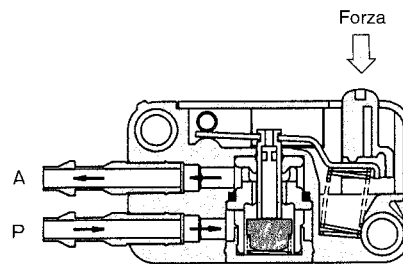
• Numero vie	
0	3 vie
1	2 vie

Costruzione

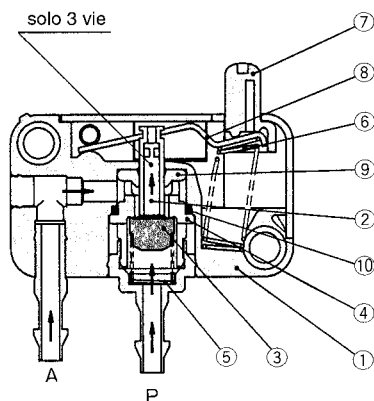
Connessione laterale/Disattivata



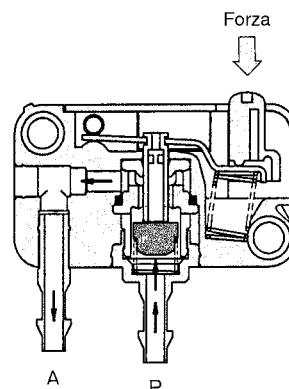
Connessione laterale/Attivata



Connessione inferiore



Connessione inferiore/Attivata



Componenti

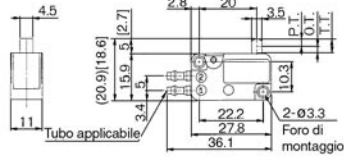
N.	Descrizione	Materiale	Note
①	Corpo	PBT	
②	Stelo valvola	Poliacetato	
③	Valvola	NBR	
④	Fermo	Poliacetato	
⑤	Molla	Acciaio inox	

N.	Descrizione	Materiale	Note
⑥	Molla	Acciaio inox	
⑦	Asta	Poliacetato	T.T.=2.5mm solo, con filettatura
⑧	Leva	Acciaio inox	
⑨	Guarnizione	NBR	
⑩	O ring	NBR	

VM1000

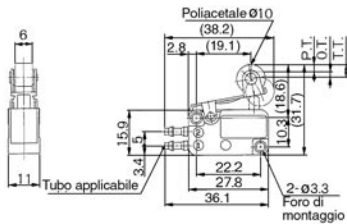
Serie VM1000/Connessione laterale

Base/VM1000-4N-00, VM1000-4NU-00
VM1100-4N-00, VM1100-4NU-00

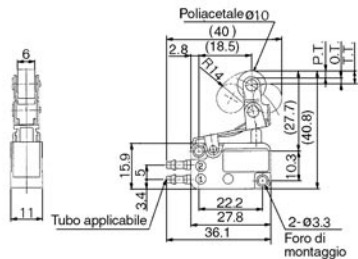


[]: T.T.=2.5mm

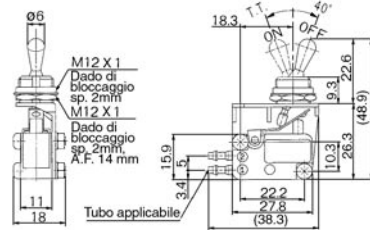
Leva a rullo/VM1000-4N-01, VM1000-4NU-01
VM1100-4N-01, VM1100-4NU-01



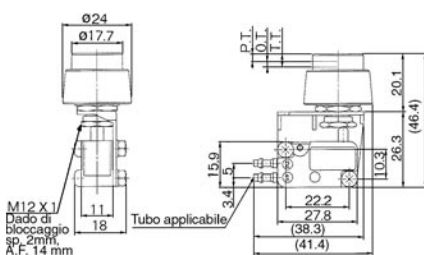
Leva a rullo unidirezionale/VM1000-4N-02, VM1000-4NU-02
VM1100-4N-02, VM1100-4NU-02



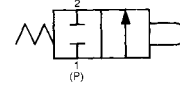
Leva 2 posizioni/VM1000-4N-08, VM1000-4NU-08
VM1100-4N-08, VM1100-4NU-08



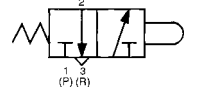
Pulsante piatto/VM1000-4N-32, VM1000-4NU-32
VM1100-4N-32, VM1100-4NU-32



Simbolo/2 vie



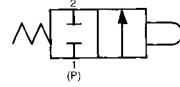
3 vie



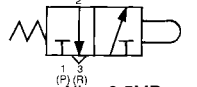
* Alim. 0.5MPa

		Tubo applicabile	
		T0425	TU0425, T0403, TS0425
Conn. laterale	3 vie	VM1000-4N-00	VM1000-4NU-00
	2 vie	VM1100-4N-00	VM1100-4NU-00
F.O.F.*		6N	
P.T.		2.5mm[2mm]	
O.T.		2.3mm[0.5mm]	
T.T.		4.8mm[2.5mm]	

Simbolo/2 vie



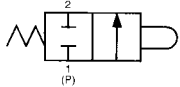
3 vie



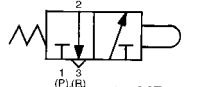
* Alim. 0.5MPa

		Tubo applicabile	
		T0425	TU0425, T0403, TS0425
Conn. laterale	3 vie	VM1000-4N-01	VM1000-4NU-01
	2 vie	VM1100-4N-01	VM1100-4NU-01
F.O.F.*		6N	
P.T.		2.5mm	
O.T.		2mm	
T.T.		4.5mm	

Simbolo/2 vie



3 vie

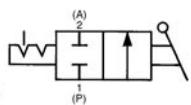
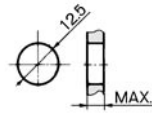


* Alim. 0.5MPa

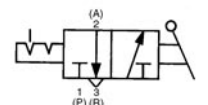
		Tubo applicabile	
		T0425	TU0425, T0403, TS0425
Conn. laterale	3 vie	VM1000-4N-02	VM1000-4NU-02
	2 vie	VM1100-4N-02	VM1100-4NU-02
F.O.F.*		6N	
P.T.		2.5mm	
O.T.		2mm	
T.T.		4.5mm	

Foro per mont. a pannello

Simbolo/2 vie



3 vie

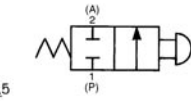
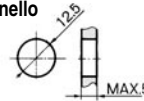


* Alim. 0.5MPa

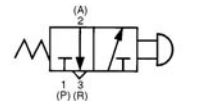
		Tubo applicabile	
		T0425	TU0425, T0403, TS0425
Conn. laterale	3 vie	VM1000-4N-08	VM1000-4NU-08
	2 vie	VM1100-4N-08	VM1100-4NU-08
F.O.F.*		4N	
P.T.		40°	

Foro per mont. a pannello

Simbolo/2 vie



3 vie

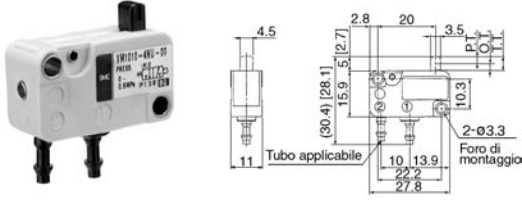


* Alim. 0.5MPa

		Tubo applicabile	
		T0425	TU0425, T0403, TS0425
Conn. laterale	3 vie	VM1000-4N-32	VM1000-4NU-32
	2 vie	VM1100-4N-32	VM1100-4NU-32
F.O.F.*		6N	
P.T.		2.5mm	
O.T.		2mm	
T.T.		4.5mm	

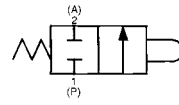
Serie VM1000/Collegamento lato inferiore

Base/VM1010-4N-00, VM1010-4NU-00
VM1110-4N-00, VM1110-4NU-00

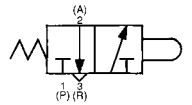


[]: T.T.=2.5mm

Simbolo/2 vie



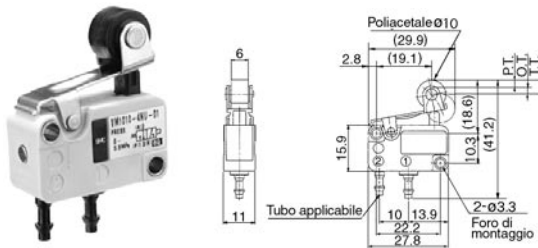
3 vie



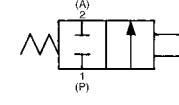
* Alim. 0.5MPa

		Tubo applicabile	
		T0425	TU0425, T0403, TS0425
Conn. inferiore	3 vie	VM1010-4N-00	VM1010-4NU-00
	2 vie	VM1110-4N-00	VM1110-4NU-00
F.O.F.*		6N	
P.T.		2.5mm	
O.T.		2.3mm[0.5mm]	
T.T.		4.8mm[2.5mm]	

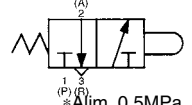
Leva a rullo/VM1010-4N-01, VM1010-4NU-01
VM1110-4N-01, VM1110-4NU-01



Simbolo/2 vie



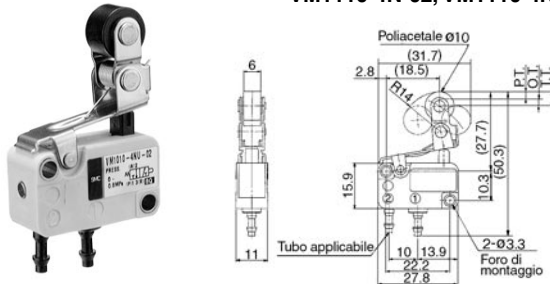
3 vie



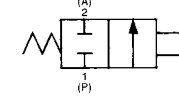
* Alim. 0.5MPa

		Tubo applicabile	
		T0425	TU0425, T0403, TS0425
Conn. inferiore	3 vie	VM1010-4N-01	VM1010-4NU-01
	2 vie	VM1110-4N-01	VM1110-4NU-01
F.O.F.*		6N	
P.T.		2.5mm	
O.T.		2mm	
T.T.		4.5mm	

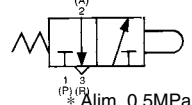
Leva a rullo unidirezionale/VM1010-4N-02, VM1010-4NU-02
VM1110-4N-02, VM1110-4NU-02



Simbolo/2 vie



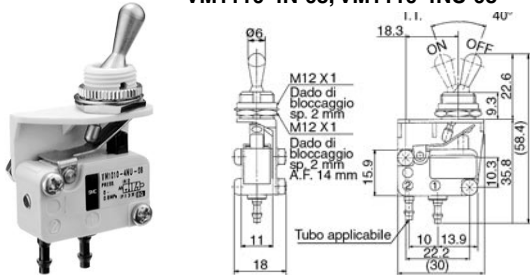
3 vie



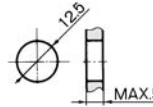
* Alim. 0.5MPa

		Tubo applicabile	
		T0425	TU0425, T0403, TS0425
Conn. inferiore	3 vie	VM1010-4N-02	VM1010-4NU-02
	2 vie	VM1110-4N-02	VM1110-4NU-02
F.O.F.*		6N	
P.T.		2.5mm	
O.T.		2mm	
T.T.		4.5mm	

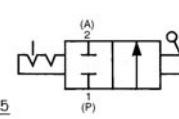
Leva 2 posizioni/VM1010-4N-08, VM1010-4NU-08
VM1110-4N-08, VM1110-4NU-08



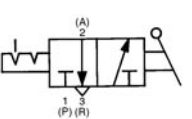
Foro per mont. a pannello



Simbolo/2 vie



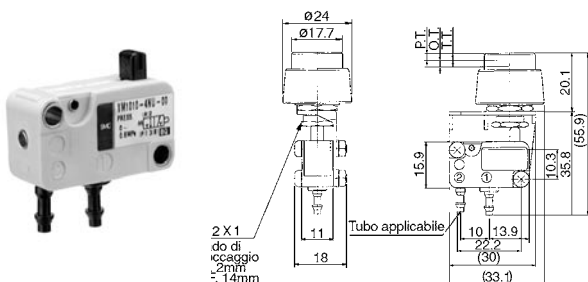
3 vie



* Alim. 0.5MPa

		Tubo applicabile	
		T0425	TU0425, T0403, TS0425
Conn. inferiore	3 vie	VM1010-4N-08	VM1010-4NU-08
	2 vie	VM1110-4N-08	VM1110-4NU-08
F.O.F.*		4N	
T.T.		40°	

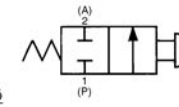
Pulsante/VM1010-4N-32, VM1010-4NU-32
VM1110-4N-32, VM1110-4NU-32



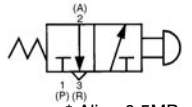
Foro per mont. a pannello



Simbolo/2 vie



3 vie



* Alim. 0.5MPa

		Tubo applicabile	
		T0425	TU0425, T0403, TS0425
Conn. inferiore	3 vie	VM1010-4N-32	VM1010-4NU-32
	2 vie	VM1110-4N-32	VM1110-4NU-32
F.O.F.*		6N	
P.T.		2.5mm	
O.T.		2mm	
T.T.		4.5mm	