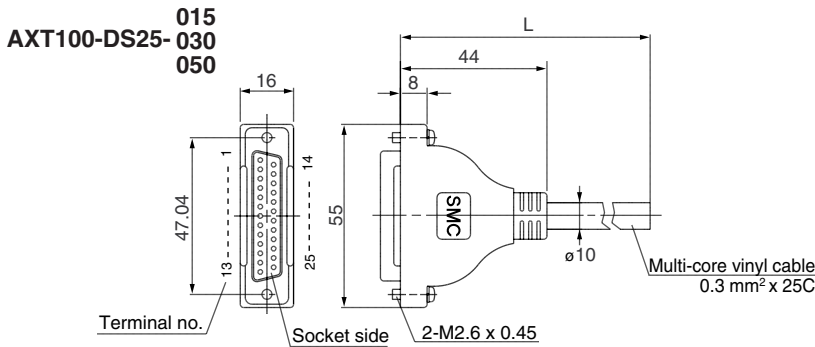


Manifold Option

■ D-sub connector (25 pins)/Cable assembly



Connector manufacturers' example

- Hirose Electric Co., Ltd.
- Fujitsu Limited
- Japan Aviation Electronics Industry, Ltd.
- J.S.T. Mfg. Co., Ltd.

D-sub Connector Cable Assembly

| Cable length (L) | Assembly part no. | Note |
|------------------|-------------------|------------------------|
| 1.5 m | AXT100-DS25-015 | Cable 25 cores x 24AWG |
| 3 m | AXT100-DS25-030 | |
| 5 m | AXT100-DS25-050 | |

* For other commercial connectors, use a 25 pins type with female connector conforming to MIL-C-24308.

Electric Characteristics

| Item | Characteristics |
|---|-----------------|
| Conductor resistance $\Omega/\text{km}, 20^\circ\text{C}$ | 65 or less |
| Voltage limit VAC, 1 min. | 1000 |
| Insulation resistance $M\Omega/\text{km}, 20^\circ\text{C}$ | 5 or less |

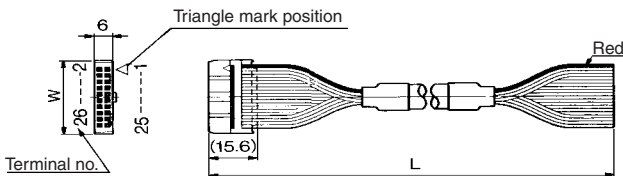
* The minimum bending radius of D-sub connector cable assembly is 20 mm.

D-sub Connector Cable Assembly Terminal No.

| Terminal no. | Lead wire color | Dot marking |
|--------------|-----------------|-------------|
| 1 | Black | None |
| 2 | Brown | None |
| 3 | Red | None |
| 4 | Orange | None |
| 5 | Yellow | None |
| 6 | Pink | None |
| 7 | Blue | None |
| 8 | Purple | White |
| 9 | Gray | Black |
| 10 | White | Black |
| 11 | White | Red |
| 12 | Yellow | Red |
| 13 | Orange | Red |
| 14 | Yellow | Black |
| 15 | Pink | Black |
| 16 | Blue | White |
| 17 | Purple | None |
| 18 | Gray | None |
| 19 | Orange | Black |
| 20 | Red | White |
| 21 | Brown | White |
| 22 | Pink | Red |
| 23 | Gray | Red |
| 24 | Black | White |
| 25 | White | None |

■ Flat ribbon cable connector/Cable assembly

AXT100-FC□- $\frac{1}{3}$



Flat Ribbon Cable Assembly

| Cable length (L) | 10 pins | 20 pins | 26 pins |
|---------------------|---------------|---------------|---------------|
| 1.5 m | AXT100-FC10-1 | AXT100-FC20-1 | AXT100-FC26-1 |
| 3 m | AXT100-FC10-2 | AXT100-FC20-2 | AXT100-FC26-2 |
| 5 m | AXT100-FC10-3 | AXT100-FC20-3 | AXT100-FC26-3 |
| Connector width (W) | 17.2 | 30 | 37.5 |

* For other commercial connectors, use a type with strain relief that conform to MIL-C-83503.

Connector manufacturers' example

- Hirose Electric Co., Ltd.
- Sumitomo 3M Limited
- Fujitsu Limited
- Japan Aviation Electronics Industry, Ltd.
- J.S.T. Mfg. Co., Ltd.

⚠ Caution

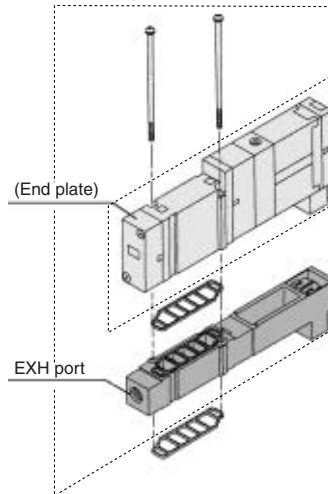
Mounting screw tightening torques

M2: 0.17 N·m
M3: 0.8 N·m
M4: 1.4 N·m

⚠ Warning

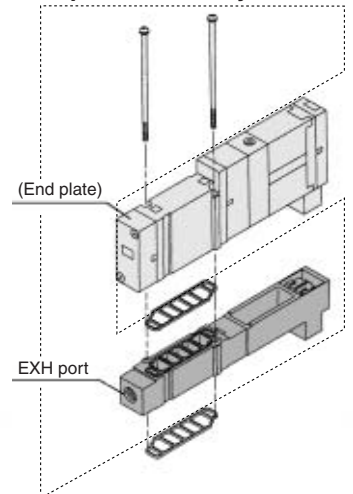
When mounting a valve or spacer on the manifold base or sub-plate, etc., those mounting directions are determined. If mounted in the wrong direction, the equipment to be connected may cause malfunction. Refer to external dimensions in pages 1-6-92 to 1-6-109, and then mount it.

■ Individual SUP spacer assembly



| Series | Assembly part no. | Port size |
|---------------|-------------------|-----------|
| SX3000 | SX3000-38-3A | M5 x 0.8 |
| SX5000 | SX5000-38-17A | 1/8 |

■ Individual EXH spacer assembly



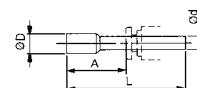
| Series | Assembly part no. | Port size |
|---------------|-------------------|-----------|
| SX3000 | SX3000-39-3A | M5 x 0.8 |
| SX5000 | SX5000-39-17A | 1/8 |

■ Plug

Inserted into an unused cylinder port and SUP/EXH ports. Purchasing order is available in units of 10 pieces.

* Thread type

| Nil | Rc |
|----------|------|
| F | G |
| N | NPT |
| T | NPTF |



Dimensions

| Applicable fittings size ϕ d | Model | A | L | D |
|-----------------------------------|----------------|------|----|------|
| 4 | KQ2P-04 | 16 | 32 | 6 |
| 6 | KQ2P-06 | 18 | 35 | 8 |
| 8 | KQ2P-08 | 20.5 | 39 | 10 |
| 10 | KQ2P-10 | 22 | 43 | 12 |
| 5/32" | KQ2P-03 | 16 | 32 | 6 |
| 1/4" | KQ2P-07 | 18 | 35 | 8.5 |
| 5/16" | KQ2P-09 | 20.5 | 39 | 10 |
| 3/8" | KQ2P-11 | 22 | 43 | 11.5 |